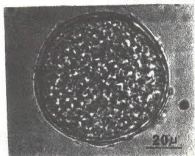


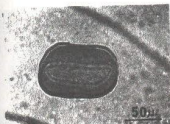
Fig. 36. Pollen grains of some chiropterophilous plants.  
 Photographs marked (g) are of grains in guano  
 samples from Eonycteris spelaea; those marked (f)  
 are from flowers.



Arenga spp.(g). Note the  
 swollen bases to the spines.



Musa truncata(f). Note the  
 substance on the outer wall  
 of the exine. This is sticky



Cocos nucifera(f)



Croxylum indicum(f)

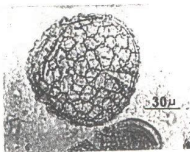


Eugenia malaccensis(f)



Mangifera spp.(g).

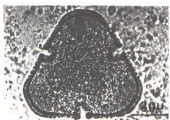
Fig. 37. Pollen grains of some chiropterophilous plants.  
 Photographs marked (g) are of grains in guano  
 samples from Eonycteris spelaea; those marked (f)  
 are from flowers.



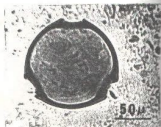
Ceiba pentandra(g)



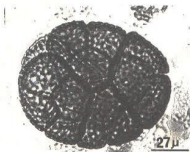
Durio graveolens(f)



Bombax valetonii(f)



Durio zibethinus(f)



Parkia speciosa(f)



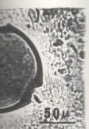
T3(g)

Fig. 38. Pollen grains of some chiropterophilous plants and anthers of Artocarpus spp. Photographs marked (g) are of items in the guano of Eonycteris spelaea; those marked (f) are from flowers.



40 $\mu$

aveolens(f)



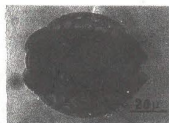
50 $\mu$

ibethinus(f)

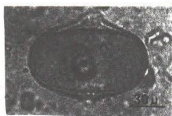


25 $\mu$

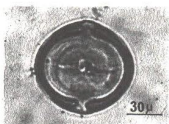
T3(g)



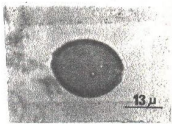
Barringtonia racemosa(f)



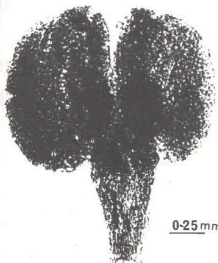
Sonneratia alba(g)



T8(g)



Artocarpus spp.(g)



0.25mm

Anther of Artocarpus heterophyllus(g)



0.25mm

Anther of Artocarpus spp. (g). Note the pollen grains.)